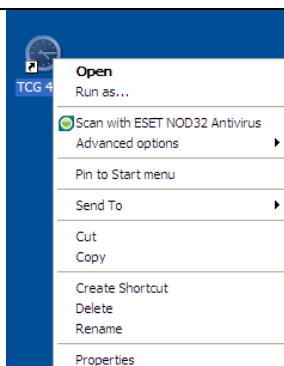


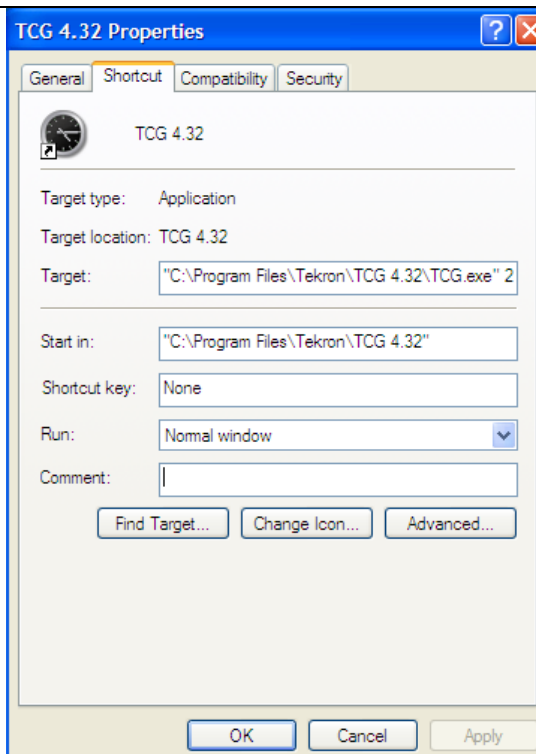
Restricting the ComPort for Tekron TCG Serial Software

The Tekron “Time Code Generator (TCG) Configuration Tool” is used to set up serial configured TCG series of GPS clocks. Upon starting the TCG software, this scans all available serial ports in an attempt to connect to an available clock. However, for some, the convenience of this automatic scanning can be undesirable. To force the TCG Configuration Tool to a single port, you can add the desired port number to the command line when starting the program. This document shows the method of setting this using a desktop icon.

1. Create desktop icon, right click and select properties.



2. In the “Target” line, add the number of the ComPort that the scanning is to be limited to. Note: After the existing quotation mark (“) add a space followed by ComPort number. In this example “ 2
3. Click OK.



- Run the application by clicking on the desktop icon. The program will limit its scan to the selected port number.

