

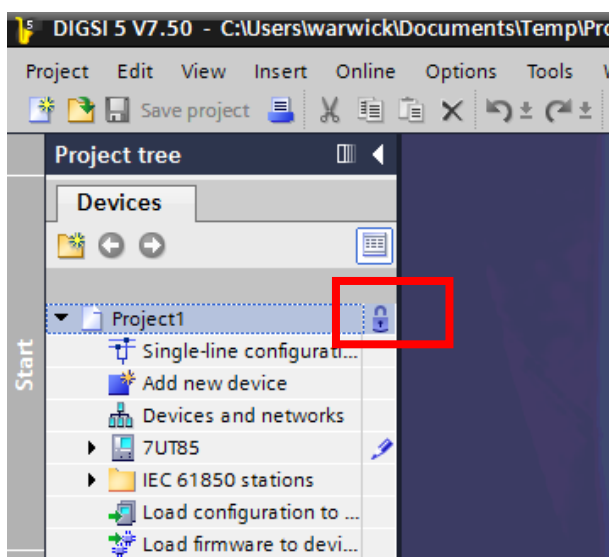
DIGSI 5 QUICK NOTES
DIGSI-5-QN0017: Changing a Project from being Plug-and-Play

This note now only applies to use of DIGSI 5 versions earlier than 7.9. DIGSI 5 version 7.9 removes the plug-and-play functionality. Setting files can be extracted from a relay to DIGSI, updated and reloaded to the relay without plug-and-play warnings or restrictions. DIGSI 5 setting files in Version 7.9 format do not have the plug-and-play setting in the Project property. Importing a project from an earlier version of DIGSI will remove the plug-and-play setting.

DIGSI 5 provides a convenient method to download settings and process data from a relay, using a “Plug-and-Play” procedure. This allows a connection to be made to a relay, without first having to have the original relay project file.

The process of downloading settings and fault records from a relay via Plug-and-Play is detailed in HV Power’s DIGSI 5 Quick Note QN0008.

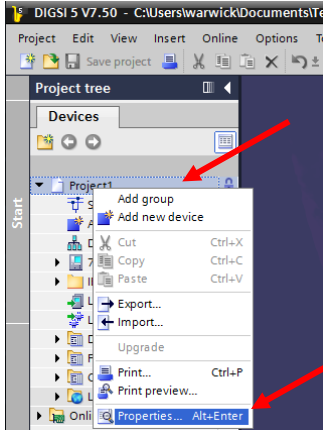
When a project is created and settings downloaded via plug-and-play, the project tree shows a padlock symbol at the project level.



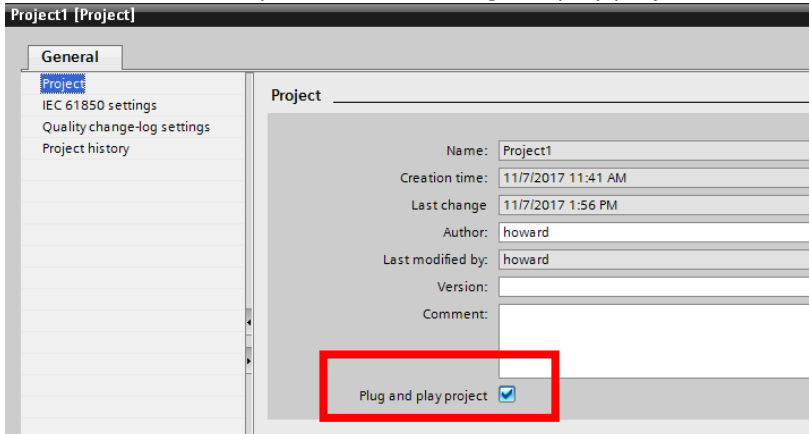
Plug-and-Play projects cannot be loaded back into a relay. However, it is possible to change the project status from Plug-and-Play to allow this to happen.

Changing a project from “Plug-and-Play”

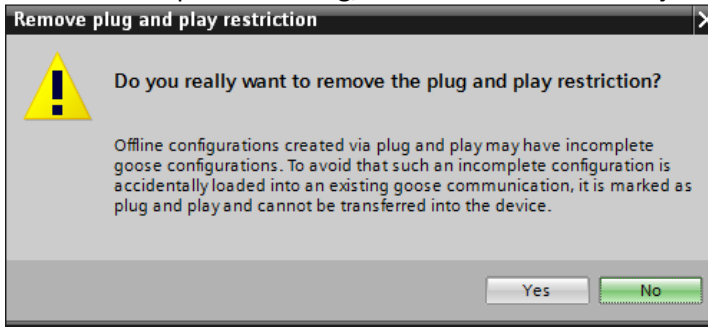
1 Right hand click on the project and select Properties



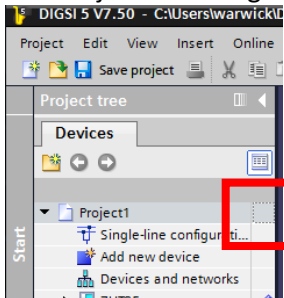
2 In the Window that opens, uncheck “Plug and play project”



3 Read and accept the warning, then select OK in the Project Properties window.



4 The Project is no longer “Plug-and-Play”



QUICK GUIDE TO: Cautions on reusing settings from Plug-and-Play projects

With IEC 61850 projects with GOOSE messaging, where relay setting changes are to be undertaken it is always recommended to start with the original Project file that contains the appropriate station information.

It is not recommended to use Plug-and-Play to extract settings from one relay to modify and load again as Plug-and-Play projects only contain information specific to the relay. They do not contain station information such as project single line diagram, test sequences or IEC 61850 Station information etc.

Siemens highly recommends not to change the system topology (SLE) and the IEC 61850 configuration in the plug-and-play projects as these projects do not include all data valid across devices. To do so, use the original project.